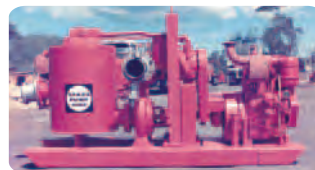


“SYKED-UP”

Newsletter ❖ Autumn 2007



SYKES CELEBRATE



40 *years* 1967-2007



Sykes are excited to celebrate 40 years operation in Australia. In 1967 Sykes Pumps was established in Australia by UK company Henry Sykes PLC to service the growing mining and construction industries.



With numerous changes in structure and ownership over the years Sykes have continued to go from strength to strength with sustained growth and expansion across both the Australian and international markets.



In 2007 Sykes have offices across Australia and New Zealand as well as in Indonesia, Hong Kong, Dubai, the USA and South Africa.



Whilst Sykes head office and manufacturing is based in Cardiff NSW, a second manufacturing plant is located in Dubai to cater to the requirements of the Middle East, Africa and Europe. Sykes rental partnership, Arabian Equipment Rentals caters to the requirements of the demanding Middle East rental market.



Sykes engineering team continue to improve Sykes' product offering with ongoing development into new and improved products to suit the ever changing requirements of the demanding mining and construction industries. With 40 years experience in one of the harshest environments in the world, Sykes has established its products to be some of the toughest and hardest working in the market.



RENTAL SALES SERVICE

Sykes New Zealand



Sykes is one of New Zealand's leading pump rental companies. With branches in Auckland and Christchurch, Sykes are able to provide rental equipment for projects anywhere in New Zealand.

The Sykes New Zealand Pump range includes the fuel efficient Olympic range of contractors pumps, the Himax and Xtra range of high head and high flow pumps, and the 'QS' Quiet Solution and new 'Yakka' acoustic pumpsets.

In addition to Sykes own pumps, Sykes New Zealand stock a fleet of Grindex and Dragflow submersible pumps. These pumps are suitable for any submersible application including dredging, deep well applications and underground mining.

Sykes New Zealand offer pumps for sale and rental. Sykes highly trained staff and team of engineers are able to provide the right pump to suit your specific application and are available around the clock to service your equipment as required and assist with your rental needs.

Sykes also offer rental on a range of Safeway traffic management equipment including portable traffic lights, speed advisory signs, variable message signs and Daymaker lighting towers. For more information about Sykes products take a look at the Sykes Group website www.sykesgroup.com or contact Sykes New Zealand on 0800 4 SYKES.

Catering to NZ & the South Pacific

Sykes New Zealand not only cater to the pumping requirements of New Zealand's north and south islands but also the numerous islands in the South Pacific.

In French Polynesia, Sykes Pumps are being used to fulfil the pumping requirements of the contracting and mining industries.

One of the largest machinery suppliers to the territory, Intermat Group Tahiti have recently purchased a number of custom built Sykes Pump units as well as a range of Grindex submersible pumps for their rental fleet. With the delivery of the new pumps, Intermat will have a reliable range of dewatering equipment available for hire or purchase with power usage, solids handling, flows and fuel efficiencies unmatched within the region.

The pumps selected by Intermat Group are versatile to suit the varied requirements of the rental market. The pictured unit is a CP150i which features a drop discharge. This ensures the orientation of the discharge hose will suit each new application. Powered by a Cummins 3.3T diesel engine and providing flows to 175 l/sec and shut head to 60m the pumps are built tough to withstand the regions hot and harsh conditions whilst providing unmatched pumping performance.



SYKES NEW ZEALAND Ph: 0800 4 SYKES

REMOTE PUMP START

Streamlines Truck Fill

In response to requests from the mining industry, Sykes engineering have developed a remote start option to suit any model in the Sykes Pump range.

The remote start works via an RF radio signal sent from a portable vehicle mounted hand held remote control. This allows the pump to be started and stopped from within 2km anywhere within line of site on the mine, quarry or construction site.



Radio Hand Held Remote Control

A remote start pump will suit a range of applications including truck fill and control of pumps in difficult to access locations. These include pumps mounted on pontoons and equipment situated in remote locations.

When using the remote, the pump's turbo is protected as the pump will start at idle speed for one minute before ramping up to a predetermined rpm to suit each specific pumping application. When stopped, the pump will return to idle speed for one minute before turning off.

The system is OH&S friendly as the driver does not need to leave the safety of the cabin to start and stop the pumpsets. This streamlined process also saves time and money by allowing trucks to be filled without the operator leaving the cabin.

For more information contact your nearest Sykes branch.

Purchase Parts Up Front & SAVE



Sykes are offering Spare Parts Kits at a discounted price if they are purchased at the same time as a pump.

Spare Parts Kits are available for Priming, Minor Overhaul and Major Overhaul.

Purchase a Major Overhaul Kit at anytime and receive a discount on your spare parts. Purchase a Major Overhaul Kit at the time of pump purchase and receive an even greater discount.

By purchasing up front you will reduce your maintenance costs and ensure against potential downtime.

Don't miss out on the opportunity to save. Request that a spare parts kit is included in your quotation.

Spare parts kits can be purchased at any time with savings to be made on all parts.

By purchasing spares in a kit no part will be overlooked ensuring simple maintenance procedures with minimal downtime.

External Fuel Tank SOLUTION

An external fuel tank has been incorporated into the design of a NSW council's QSHH200i acoustic pumpset. The Cummins QSM11 diesel driven pump has a fuel tank of its own however required the additional 12,000 L tank to allow for extended run times without having to add fuel each day.

The pump is used for water transfer duties and moves up to 20 mega liters each day between a supply and storage area. The QSHH200i operates automatically when there is both enough water in the supply and a requirement in the storage area.

Fuel is topped up automatically from the external tank with the use of level sensors. When the fuel gets to a low level in the pump, the sensor triggers the fuel transfer pump to start up and pump fuel from the auxiliary fuel tank. Once the high level is reached in the pump fuel tank the sensor triggers the fuel pump to switch off.

This remote fuel tank setup would also be suited to any application involving high fuel usage or remote operation where refilling fuel regularly could be difficult. The QSHH200i is ideal for water transfer, emergency sewage bypass and any application with flooded suction or suction lift conditions requiring high flow and high head. The HH220i achieves discharge heads to 139m and flows to 285 l/sec.



Why Sykes 'QS' and Yakka QUIETLY DOMINATE

EXTREMELY QUIET OPERATION

The traditional Sykes QS pumpset can be tailored to almost any application with suitability to any of the pumps in Sykes' extensive range. With sound reduction to 62dBA @ 7m when operating at full load, Sykes' QS is quieter than any other 'silent' pumpset on the market. Sykes QS is the only acoustic pump lined with Pyrotex sound absorbing barriers and acoustic lined internal paneling; competing pumps simply offer sheet metal only.

Sykes Yakka quiet solution pumpset offers a more versatile and compact 'pod' design. Like the traditional 'QS' the Yakka is the quietest unit of its type on the market with rating to 67dBa @ 7m.

'QS' EVOLUTION

Sykes 'QS' Quiet Solution pumpsets have evolved to suit the demanding and diverse requirements of users across a wide range of industries. Whether it is in mining, quarrying, construction, municipal, sewage bypass and water treatment applications, Sykes have a quiet solution to suit your requirements.

The newest addition to Sykes QS range, the Yakka offers style and practicality unmatched in the diesel driven pumping market. Sykes engineers have developed a lightweight, convenient unit which has evolved to suit the requirements of pump owners and the rental market alike.



Sykes 'QS' Quiet Solution Pumpset



Sykes Yakka150

EASY ACCESS

Sykes Yakka has lockable gull wing doors on either side of the pod allowing for easy access to the pump and engine. The traditional QS pumpset also has access doors on either side of the pump. Both the Yakka 'pod' and the QS canopy come with a single point lift and can be fully removed for major servicing.

CUSTOMISATION

Suitable for permanent positioning or mounting to a trailer the QS is truly unique in its customisation. Individual units can be fitted with external fuel tanks as well as complete lengths of hose and other accessories for remote uses. Alternatively Sykes QS units can be permanently fixed on location to provide a permanent pumping solution.

The Yakka 'pod' was designed to allow for customisation to almost any trailer or skid configuration. It comes with tubular side and end protection and impact resistant, self coloured panels which can be customised to suit the owner's preference.

SIMPLE OPERATION

All QS units encase Sykes auto-prime pumps which offer dry self priming and reprime. All are key start with engine protection and are quality accredited to AS9002.

SOLINGO VMS

Reduces Lost Production Time

Sykes versatile Solingo variable message sign is being used extensively throughout the mining industry to provide information to personnel onsite.

The Solingo which is available in 3 versions, the 1800, 2400 and 2400e is an ideal way to communicate important messages to workers across a sparse environment such as a minesite.

An example of a mining application is the Solingo 2400 sign which is being used at Telfer Gold Mine in WA. Telfer use the sign to reduce speeding around the mine site and to display general messages to personnel.

On mine shutdown the message 'RETURN ALL SAFETY TAGS' is displayed to ensure that permits, isolation and safety tags are removed from all pieces of machinery. This reduces lost production time substantially as the mill can not be started the following day with any of the safety tags missing. The savings attributed to reduction in lost time have paid for the sign several times over.



All Solingo models have remote programming making them suited to isolated locations and have high visibility even in direct sunlight. The 1800 and 2400 models are able to display multilingual messages as well as graphics and animations.

The Solingo VMS is available in two display sizes to suit any application. For more information contact your nearest Sykes Branch.

Sykes Solingo 2400 on site at Telfer Gold Mine

LFTIR Lowest in 5 Years

Sykes Group is committed to providing an injury free workplace for its employees and contractors and has continued in it's quest to achieve best practice in health and safety.

A considerable amount of effort has been applied across the company to achieve these objectives, particularly at Sykes Head Office and manufacturing facility in Cardiff. The component with the greatest incidence, first aid treatment injuries rate (FTIFR) dropped to its lowest in 5 years in 2006 with only 887, a fall of 22% from the 2005 rate and 42% less than 2004.

FTIFR is a component of overall incidents however is not included in the count of recordable injuries. FTIFR includes all injuries that do not require outside assistance and can be treated without any time lost. An ongoing reduction in FTIFR as demonstrated at Sykes also indicates an overall reduction in injuries and credits Sykes' commitment to safety.

Sykes continues to demonstrate safe work practices with ongoing improvements in procedures and policies to reduce all types of treatment injuries.



Sykes

Exhibit

in 2007

In 2007 Sykes will be exhibiting at Civenex and AIMEX in Sydney as well as Roadteq in Qatar. Visit our stand to take a first hand look at Sykes range of innovative pumping and Safeway electronic traffic management equipment. Be one of the first to see the new models to be included in the successful Yakka range and the new efficient Solingo 2400e variable message sign.

Keep up to date with Sykes exhibitions by viewing our event listing online at www.sykesgroup.com.

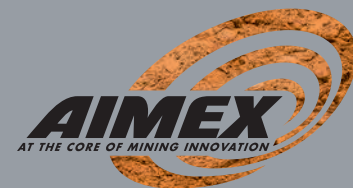
We hope to see you at an expo soon!



10th – 12th April 2007
Roadteq Qatar
Qatar international centre
Stand number A3
www.roadteq.com



16th -17th May 2007
Civenex
Western International Dragway
Eastern Creek, NSW
Stand 229
www.civenex.com



4th – 7th September 2007
AIMEX
Sydney Olympic Showground
Homebush, NSW
Stand R113
www.aimex.reedexhibitions.com.au

Sykes Growth in ASIA

With the assistance of distributing partner Trakindo, Sykes Pumps growth has continued throughout the Indonesian region. Sykes Pumps are extensively used throughout a number of Indonesian mines and in projects across Indonesia.

Sykes supply Trakindo with pumps which are custom designed to suit the harsh requirements of the Indonesian environment. All pumps are supplied with complete stainless steel construction including a stainless steel non-return valve and drop discharge. A heavy duty bull bar and single point lift and canopy over the diesel engine provide the pump with additional strength. Oil bathed bearings improve life and reduce maintenance.

Sykes have also expanded into Hong Kong with the establishment of an office and the appointment of Rico Tam. The Hong Kong office will serve as a sales and rental branch to further establish Sykes within the South East Asian Region. Initially a small fleet of Sykes CP150i 6" pumps will service the area with additional equipment to be added as demand grows.

Sykes CP150i is the most fuel efficient 6" pump on the market. With flows to 175 l/sec and discharge head to 60m the Hong Kong fleet will be the premium in the region.



XH150 in operation at a mine in South Kalimantan



Head Office & Manufacturing
42 Munibung Road, Cardiff NSW
AUSTRALIA 2285
Tel: +61 (0)2 4954 3333,
Fax: +61 (0)2 4954 3303
Email: info@sykesgroup.com

SPARE PARTS & SERVICE
1800 13 19 50

SYDNEY
+61 (0)2 9894 4577

NEWCASTLE
+61 (0)2 4954 3333

WESTERN NSW
0423 029 183

BRISBANE
+61 (0)7 3382 7600

TOWNSVILLE
+61 (0)7 4725 4244

ROCKHAMPTON
0427 543 323

PERTH
+61 (0)8 9248 4944

KALGOORLIE
+61 (0)8 9091 7399

MELBOURNE (VIC, SA, TAS, NT)
+61 (0)3 9543 2000

AUCKLAND
+64 (0)9 278 8300

CHRISTCHURCH
+64 (0)3 344 2100

USA
+1 661 665 9495

MIDDLE EAST
+971 4881 1599

AFRICA
+27 (0)83 395 7377

INDONESIA
+62 21 750 0080

HONG KONG
+85 291 718 628



FREE SUBSCRIPTION

Please complete the following 3 sections and fax back to:
Fax: +61 (0)2 9894 4532.

1 _____

Subscribe me to E-News

Email

2 _____

Subscribe me to Syked-Up Newsletter

Name Position

Company

Postal Address

State..... Post Code..... Country

Tel..... Fax

3 _____

Please tick appropriate boxes:

INDUSTRY

- Engineering
- Mining
- Council
- Government
- Manufacture
- Hire
- Industrial
- Contractor
- Other (Please Specify)

PRODUCT OF INTEREST

- Sykes Pumps
- Portable Traffic Lights
- Variable Message Signs
- Speed Advisory Signs
- Grindex Pumps
- Dragflow Pumps